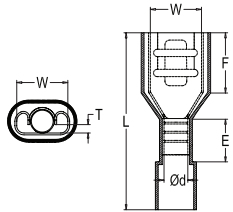


RCCN 日成PNA尼龙全绝缘母端子 PNA Nylon Insulated Female Lug



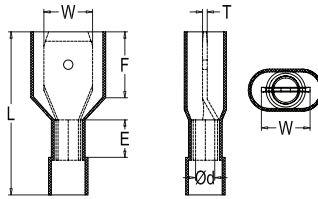
型号 Item No.	AWG mm ² 包装	尺寸 DIMENSION						颜色 Color
		T×W mm	W mm	F mm	E mm	dφ mm	L mm	
PN1.25-250A	22-16	0.8×6.35	6.6	8.0	5.0	1.7	22	红 Red
PN1.25-187A	0.5-1.5 1000PCS	0.8×4.8	4.8	6.5	5.0	1.7	22	
PN1.25-110A		0.8×2.8	2.8	6.5	5.0	1.7	19.5	
PN2-250A	16-14 1.5-2.5	0.8×6.35	6.6	8.0	5.0	2.3	22	蓝 Blue
PN2-187A	1000PCS	0.8×4.8	4.8	6.5	5.0	2.3	20	
PN5.5-250A	12-10/4-6 500PCS	0.8×6.35	6.6	8.0	6.0	3.4	25.5	黄 Yellow



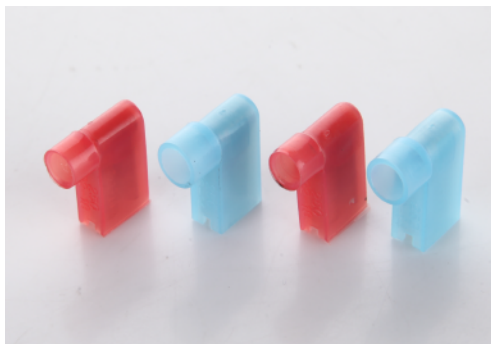
RCCN 日成PNB尼龙全绝缘公端子 PNB Nylon Insulated Male Lug



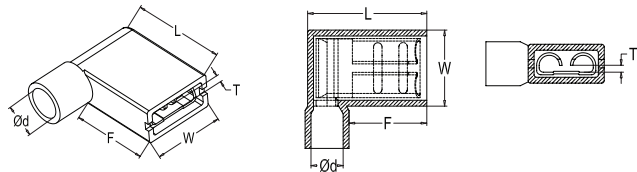
型号 Item No.	AWG mm ² 包装	尺寸 DIMENSION						颜色 Color
		T×W mm	W mm	F mm	E mm	dφ mm	L mm	
PN 1.25-250B	22-16/0.5-1.5	0.8×6.35	6.35	9.0	5.0	1.7	24	红Red
PN 2-250B	16-14/1.5-2.5	0.8×6.35	6.35	9.0	5.0	2.3	24	蓝Blue
PN 5.5-250B	12-10/4-6	0.8×6.35	6.35	9.0	6.0	3.4	26.0	黄Yellow



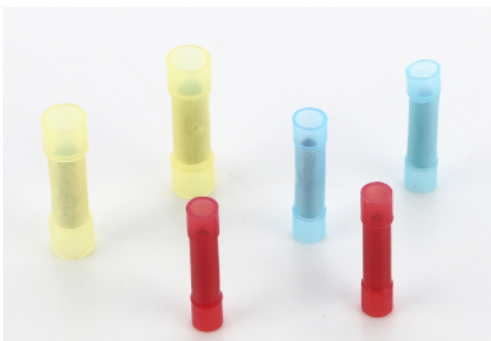
RCCN 日成FN型尼龙旗型绝缘端子 FN Flag Female Nylon Disconnects



型号 Item No.	NEMA TAB	尺寸 DIMENSION					绝缘套颜色 INSULATION COLOR
	T×W mm	W mm	F mm	dφ mm	L mm		
FN 1.25-250	0.8×6.35	6.4	9.0	1.7	2	红/Red	
FN 2-250	0.8×6.35	6.4	9.0	2.3	24	蓝/Blue	



RCCN 日成BN型尼龙中间端子 BN Butt Splice Nylon Insulated



型号 Item No.	导线截面 Insulated square		尺寸 DIMENSION			最大 电流 I _{max}	绝缘套颜色 INSULATION COLOR
	A.W.G	mm ²	dφ mm	L mm	Dφ mm		
BN-0.5	26-22	0.2-0.5	1.3	20.0	2.0	9A	黄/Yellow
BN-1.25	22-16	0.5-1.5	1.7	27.3	3.2	19A	红/Red
BN-2.0	16-14	1.5-2.5	2.3	27.3	3.8	27A	蓝/Blue
BN-5.5	12-10	4-6	3.4	27.3	5.3	48A	黄/Yellow

