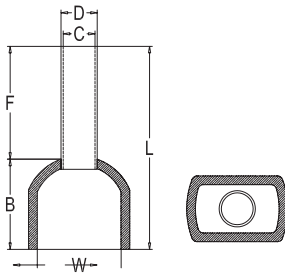


RCCN 日成EW型双线管形绝缘端子 Insulated Twin Cord End Terminals



工作极限温度: -14 至105 Ui=300V 端子材质: 镀锡紫铜管
 Limited W.T: -14 to105 Ui=300V termina material: tin coated copper

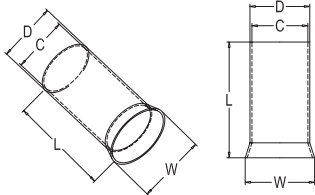
| 型号 Item No. | 尺寸 DIMENSION | | | | | | 导线截面 Insulated square mm ² | 绝缘套颜色 Color | |
|----------------|--------------|------|------|------|-----|-----|---|----------------|---------------|
| | F | L | W | B | D | C | | 法国 France | 德国 Germany |
| | mm | mm | mm | mm | mm | mm | | | |
| EW0.5-8 | 8 | 15.0 | 5.0 | 7.0 | 1.8 | 1.5 | 2x0.5 | 白色 White | 白色 White |
| EW0.75-8 | 8 | 15.8 | 5.3 | 7.8 | 2.1 | 1.8 | 2x0.75 | 蓝色 Blue | 灰色 Gray |
| EW0.75-10 | 10 | 17.8 | 5.3 | 7.8 | 2.1 | 1.8 | 2x0.75 | 蓝色 Blue | 灰色 Gray |
| EW1.0-8 | 8 | 16.0 | 5.3 | 8.0 | 2.4 | 2.1 | 2x1.0 | 红色 Red | 红色 Red |
| EW1.0-10 | 10 | 18.0 | 5.3 | 8.0 | 2.4 | 2.1 | 2x1.0 | 红色 Red | 红色 Red |
| EW1.5-8 | 8 | 16.0 | 6.2 | 8.0 | 2.6 | 2.3 | 2x1.5 | 黑色 Black | 黄色 Yellow |
| EW1.5-12 | 12 | 20.0 | 6.2 | 8.0 | 2.6 | 2.3 | 2x1.5 | 黑色 Black | 黄色 Yellow |
| EW2.5-10 | 10 | 19.8 | 7.8 | 9.8 | 3.3 | 2.9 | 2x2.5 | 灰色 Gray | 蓝色 Blue |
| EW2.5-12 | 12 | 21.8 | 7.8 | 9.8 | 3.3 | 2.9 | 2x2.5 | 灰色 Gray | 蓝色 Blue |
| EW4.0-12 | 12 | 22.2 | 8.5 | 10.2 | 4.2 | 3.8 | 2x4.0 | 橙色 Orange | 灰色 Gray |
| EW6.0-14 | 14 | 25.2 | 9.5 | 11.2 | 5.3 | 4.9 | 2x6.0 | 绿色 Green | 黄色 Yellow |
| EW10-14 | 14 | 26.0 | 12.6 | 12.0 | 6.9 | 6.5 | 2x10.0 | 棕色 Brown | 红色 Red |
| EW16-14 | 14 | 30.3 | 19.0 | 16.3 | 8.7 | 8.3 | 2x16.0 | 乳色 Milk | 蓝色 Blue |

更多选择: 备多种颜色。 More choice: more Color, come with MOQ
 说明: 本系列配套工具YAC系列 Use note: this series installed with tool of YAC series

RCCN 日成EN型管形裸端子 EN Non-Insulated Cord End Terminals



说明: 本系列0.25-16配套工具YAC系列
 本系列25-150配套液压工具YYT系列



工作极限温度: 105 Ui=300V 端子材质: 镀锡紫铜管
 Limited W.T: 105 Ui=300V Terminal material: Tin coated copper

| 型号 Item No. | 尺寸 DIMENSION | | | | 导线截面 Insulated square | |
|----------------|--------------|-----|-----|-----|--------------------------|-----------------|
| | L | D | C | W | AWG | mm ² |
| EN0.5-6 | 6 | 1.3 | 1.0 | 1.7 | #22 | 0.5 |
| EN0.5-8 | 8 | 1.3 | 1.0 | 1.7 | #22 | 0.5 |
| EN0.5-10 | 10 | 1.3 | 1.0 | 1.7 | #22 | 0.5 |
| EN0.5-12 | 12 | 1.3 | 1.0 | 1.7 | #22 | 0.5 |
| EN0.75-6 | 6 | 1.5 | 1.2 | 1.9 | #20 | 0.75 |
| EN0.75-8 | 8 | 1.5 | 1.2 | 1.9 | #20 | 0.75 |
| EN0.75-10 | 10 | 1.5 | 1.2 | 1.9 | #20 | 0.75 |
| EN0.75-12 | 12 | 1.5 | 1.2 | 1.9 | #20 | 0.75 |
| EN1.0-6 | 6 | 1.7 | 1.4 | 2.2 | #18 | 1.0 |
| EN1.0-8 | 8 | 1.7 | 1.4 | 2.2 | #18 | 1.0 |
| EN1.0-10 | 10 | 1.7 | 1.4 | 2.2 | #18 | 1.0 |
| EN1.0-12 | 12 | 1.7 | 1.4 | 2.2 | #18 | 1.0 |
| EN1.5-8 | 8 | 2.0 | 1.7 | 2.5 | #16 | 1.5 |
| EN1.5-10 | 10 | 2.0 | 1.7 | 2.5 | #16 | 1.5 |
| EN1.5-12 | 12 | 2.0 | 1.7 | 2.5 | #16 | 1.5 |
| EN1.5-18 | 18 | 2.0 | 1.7 | 2.5 | #16 | 1.5 |
| EN2.5-8 | 8 | 2.5 | 2.2 | 3.3 | #14 | 2.5 |
| EN2.5-10 | 10 | 2.5 | 2.2 | 3.3 | #14 | 2.5 |
| EN2.5-12 | 12 | 2.5 | 2.2 | 3.3 | #14 | 2.5 |
| EN2.5-18 | 18 | 2.5 | 2.2 | 3.3 | #14 | 2.5 |
| EN4.0-9 | 9 | 3.2 | 2.8 | 3.9 | #12 | 4.0 |
| EN4.0-12 | 12 | 3.2 | 2.8 | 3.9 | #12 | 4.0 |
| EN4.0-18 | 18 | 3.2 | 2.8 | 3.9 | #12 | 4.0 |
| EN6.0-10 | 10 | 3.9 | 3.5 | 4.8 | #10 | 6.0 |
| EN6.0-12 | 12 | 3.9 | 3.5 | 4.8 | #10 | 6.0 |
| EN6.0-15 | 15 | 3.9 | 3.5 | 4.8 | #10 | 6.0 |
| EN6.0-18 | 18 | 3.9 | 3.5 | 4.8 | #10 | 6.0 |
| EN10-12 | 12 | 4.9 | 4.5 | 5.8 | #7 | 10.0 |
| EN10-15 | 15 | 4.9 | 4.5 | 5.8 | #7 | 10.0 |
| EN10-18 | 18 | 4.9 | 4.5 | 5.8 | #7 | 10.0 |
| EN16-12 | 12 | 6.2 | 5.8 | 7.2 | #5 | 16.0 |
| EN16-15 | 15 | 6.2 | 5.8 | 7.2 | #5 | 16.0 |
| EN16-18 | 18 | 6.2 | 5.8 | 7.2 | #5 | 16.0 |

| 型号 Item No. | 尺寸 DIMENSION | | | | 导线截面 Insulated square | |
|----------------|--------------|------|------|------|--------------------------|-----------------|
| | L | D | C | W | AWG | mm ² |
| EN25-16 | 16 | 7.9 | 7.5 | 9.1 | #4 | 25 |
| EN25-22 | 22 | 7.9 | 7.5 | 9.1 | #4 | 25 |
| EN35-16 | 16 | 8.7 | 8.3 | 10.2 | #2 | 35 |
| EN35-25 | 25 | 8.7 | 8.3 | 10.2 | #2 | 35 |
| EN50-20 | 20 | 10.9 | 10.3 | 12.4 | #1 | 50 |
| EN50-25 | 25 | 10.9 | 10.3 | 12.4 | #1 | 50 |
| EN70-25 | 25 | 14.3 | 13.5 | 15.8 | 2/0 | 70 |
| EN70-32 | 32 | 14.3 | 13.5 | 15.8 | 2/0 | 70 |
| EN95-25 | 25 | 15.3 | 14.5 | 17.3 | 3/0 | 95 |
| EN95-32 | 32 | 10.9 | 10.3 | 12.4 | 3/0 | 95 |
| EN120-32 | 32 | 17.5 | 16.5 | 20.2 | 4/0 | 120 |
| EN150-40 | 40 | 20.6 | 19.6 | 23.0 | 250/300 | 150 |
| EN185-40 | 40 | 21.4 | 20.2 | 23.9 | 250/300 | 185 |