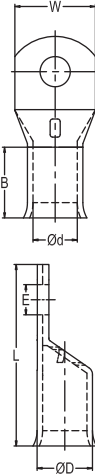


RCCN 日成TU喇叭口铜管端子 TU Bell-mouth Copper Tube Terminals



型号 Item No.	尺寸 DIMENSION					
	E	D ϕ	d ϕ	W	B	L
TU10-5	5.3	6.9	4.4	10.5	9.0	27.0
TU10-6	6.4	6.9	4.4	10.5	9.0	27.0
TU10-8	8.4	6.9	4.4	14.0	10.0	35.0
TU10-10	10.4	6.9	4.4	16.0	10.0	39.0
TU10-12	12.8	6.9	4.4	18.0	10.0	39.0
TU16-5	5.3	8.0	5.6	11.0	11.0	29.5
TU16-6	6.4	8.0	5.6	11.0	11.0	29.5
TU16-8	8.4	8.0	5.6	14.0	11.0	38.0
TU16-10	10.4	8.0	5.6	16.0	11.0	42.0
TU16-12	12.8	8.0	5.6	18.0	11.0	42.0
TU25-5	5.3	9.5	7.0	13.5	13.0	40.0
TU25-6	6.4	9.5	7.0	13.5	13.0	40.0
TU25-8	8.4	9.5	7.0	13.5	13.0	40.0
TU25-10	10.4	9.5	7.0	16.0	13.0	44.0
TU25-12	12.8	9.5	7.0	18.0	13.0	44.0
TU35-5	5.3	11.0	8.2	15.5	14.0	41.0
TU35-6	6.4	11.0	8.2	15.5	14.0	41.0
TU35-8	8.4	11.0	8.2	15.5	14.0	41.0
TU35-10	10.4	11.0	8.2	15.5	14.0	45.0
TU35-12	12.8	11.0	8.2	18.0	14.0	45.0
TU35-14	14.5	11.0	8.2	20.0	14.0	50.0
TU50-5	5.3	12.1	9.5	17.2	18.0	46.0
TU50-6	6.4	12.1	9.5	17.2	18.0	46.0
TU50-8	8.4	12.1	9.5	17.2	18.0	46.0

型号 Item No.	尺寸 DIMENSION					
	E	D ϕ	d ϕ	W	B	L
TU50-10	10.4	12.1	9.5	17.2	18.0	50.0
TU50-12	12.8	12.1	9.5	17.2	18.0	50.0
TU50-14	14.5	12.1	9.5	20.0	18.0	55.0
TU50-16	16.5	12.1	9.5	22.0	18.0	55.0
TU70-5	5.3	15.0	11.5	21.2	18.0	48.0
TU70-6	6.4	15.0	11.5	21.2	18.0	48.0
TU70-8	8.4	15.0	11.5	21.2	18.0	48.0
TU70-10	10.4	15.0	11.5	21.2	18.0	52.0
TU70-12	12.8	15.0	11.5	21.2	18.0	52.0
TU70-14	14.5	15.0	11.5	21.2	18.0	63.0
TU70-16	16.5	15.0	11.5	21.2	18.0	63.0
TU95-8	8.4	17.0	13.5	24.3	24.0	58.0
TU95-10	10.4	17.0	13.5	24.3	24.0	58.0
TU95-12	12.8	17.0	13.5	24.3	24.0	58.0
TU95-14	14.5	17.0	13.5	24.3	24.0	69.0
TU95-16	16.5	17.0	13.5	24.3	24.0	69.0
TU120-8	8.4	19.0	15.0	27.2	27.0	73.0
TU120-10	10.4	19.0	15.0	27.2	27.0	73.0
TU120-12	12.8	19.0	15.0	27.2	27.0	73.0
TU120-14	14.5	19.0	15.0	27.2	27.0	73.0
TU120-16	16.5	19.0	15.0	27.2	27.0	73.0
TU120-20	21.0	19.0	15.0	27.2	27.0	73.0
TU150-8	8.4	21.0	16.5	30.0	27.0	78.0
TU150-10	10.4	21.0	16.5	30.0	27.0	78.0
TU150-12	12.8	21.0	16.5	30.0	27.0	78.0
TU150-14	14.5	21.0	16.5	30.0	27.0	78.0
TU150-16	16.5	21.0	16.5	30.0	27.0	78.0
TU150-20	21.0	21.0	16.5	30.0	27.0	78.0
TU185-10	10.4	23.0	18.5	33.5	30.0	82.0
TU185-12	12.8	23.0	18.5	33.5	30.0	82.0
TU185-14	14.5	23.0	18.5	33.5	30.0	82.0
TU185-16	16.5	23.0	18.5	33.5	30.0	82.0
TU185-20	21.0	23.0	18.5	33.5	30.0	82.0
TU240-10	10.4	26.0	21.0	37.7	32.0	88.0
TU240-12	12.8	26.0	21.0	37.7	32.0	88.0
TU240-14	14.5	26.0	21.0	37.7	32.0	88.0
TU240-16	16.5	26.0	21.0	37.7	32.0	88.0
TU240-20	21.0	26.0	21.0	37.7	32.0	88.0
TU300-10	10.4	28.0	23.0	41.0	37.0	97.0
TU300-12	12.8	28.0	23.0	41.0	37.0	97.0
TU300-14	14.5	28.0	23.0	41.0	37.0	97.0
TU300-16	16.5	28.0	23.0	41.0	37.0	97.0
TU300-20	21.0	28.0	23.0	41.0	37.0	97.0