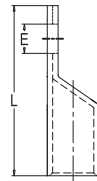
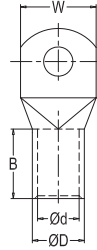
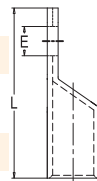
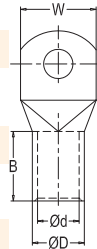


RCCN 日成HP型铜管端子 HP Copper Ture Terminals

无孔



型号 Item No.	尺寸 DIMENSION					
	E	D ϕ	d ϕ	W	B	L
HP1.5-3	3.2	3.3	1.8	6.5	6.0	15.5
HP1.5-4	4.3	3.3	1.8	6.5	6.0	17.5
HP1.5-5	5.3	3.3	1.8	9.0	6.0	19.0
HP1.5-6	6.4	3.3	1.8	9.0	6.0	22.5
HP2.5-4	4.3	4.2	2.2	7.5	6.0	17.1
HP2.5-5	5.3	4.2	2.2	8.5	6.0	19.2
HP2.5-6	6.4	4.2	2.2	9.5	6.0	22.8
HP2.5-8	8.4	4.2	2.2	13.0	6.0	28.0
HP4-4	4.3	5.0	3.0	8.5	8.0	21.8
HP4-5	5.3	5.0	3.0	9.0	8.0	22.2
HP4-6	6.4	5.0	3.0	10.0	8.0	22.2
HP6-5	5.3	6.5	3.5	10.0	11.0	28.2
HP6-6	6.4	6.5	3.5	12.0	11.0	29.1
HP6-8	8.4	6.5	3.5	15.0	11.0	31.8
HP6-10	10.5	6.5	3.5	17.0	11.0	37.0
HP10-5	5.3	7.0	4.5	12.0	11.0	28.1
HP10-6	6.4	7.0	4.5	12.0	11.0	29.0
HP10-8	8.4	7.0	4.5	14.5	10.0	33.3
HP10-10	10.5	7.0	4.5	16.0	11.0	36.9
HP16-5	5.3	8.5	5.5	12.0	14.0	33.1
HP16-6	6.4	8.5	5.5	12.5	14.0	33.5



型号 Item No.	尺寸 DIMENSION					
	E	D ϕ	d ϕ	W	B	L
HP16-8	8.4	8.5	5.5	13.8	14.0	38.0
HP16-10	10.5	8.5	5.5	17.0	14.0	42.0
HP16-12	13.2	8.5	5.5	20.0	14.0	44.5
HP25-6	6.4	10.0	7.0	14.0	15.0	34.6
HP25-8	8.4	10.0	7.0	16.0	15.0	39.0
HP25-10	10.5	10.0	7.0	18.0	15.0	44.5
HP25-12	13.2	10.0	7.0	20.0	15.0	47.0
HP35-6	6.4	12.0	8.5	16.7	16.0	38.0
HP35-8	8.4	12.0	8.5	17.5	17.0	43.0
HP35-10	10.5	12.0	8.5	18.5	16.0	46.0
HP35-12	13.2	12.0	8.5	21.3	16.0	50.0
HP50-8	8.4	14.0	10.0	21.0	19.0	47.0
HP50-10	10.5	14.0	10.0	21.0	19.0	51.2
HP50-12	13.2	14.0	10.0	21.5	19.0	52.0
HP70-8	8.4	16.5	12.0	23.2	21.0	52.0
HP70-10	10.5	16.5	12.0	23.2	21.0	52.0
HP70-12	13.2	16.5	12.0	23.2	21.0	55.7
HP95-8	8.4	18.0	13.5	25.6	25.0	59.0
HP95-10	10.5	18.0	13.5	25.6	25.0	59.0
HP95-12	13.2	18.0	13.5	25.6	25.0	61.0
HP120-10	10.5	19.5	15.0	28.2	27.0	68.0
HP120-12	13.2	19.5	15.0	28.2	27.0	68.0
HP120-16	17.0	19.5	15.0	30.0	27.0	74.0
HP150-10	10.5	21.2	16.5	30.6	30.0	71.0
HP150-12	13.2	21.2	16.5	30.6	30.0	71.0
HP150-16	17.0	21.2	16.5	30.6	30.0	77.0
HP185-10	10.5	24.2	19.0	35.1	32.0	79.0
HP185-12	13.2	24.2	19.0	35.1	32.0	79.0
HP185-16	17.0	24.2	19.0	35.1	32.0	83.0
HP240-12	13.2	26.2	21.0	37.7	36.0	89.0
HP240-16	17.0	26.2	21.0	37.7	36.0	89.0
HP240-20	21.0	26.2	21.0	37.7	36.0	95.0
HP300-12	13.2	30.2	24.0	44.0	44.0	110.0
HP300-16	17.0	30.2	24.0	44.0	44.0	110.0
HP300-20	21.0	30.2	24.0	44.0	44.0	110.0
HP400-16	17.0	33.7	27.5	49.0	50.0	119.0
HP400-20	21.0	33.7	27.5	49.0	50.0	119.0