



Female terminal housing 770680-1

Female terminal housing 770680-1

Connector type: female terminal housing

Connector system: line to board, line to line, line to device

Main locking features: Enclosure integration

Strain elimination: No

Electrical characteristics: Nominal voltage architecture (V) -12, 24, 42, 48, 80, 90, 125, 240, operating voltage (VDC) -250

Main features: black, cable outlet angle of 180°, the main material PA GF

Contact features: docking male width of 1.3 mm

Temperature range: -40 - 125 °C

Protection class: IP6K9K

Flame retardant rating: UL 94V-0

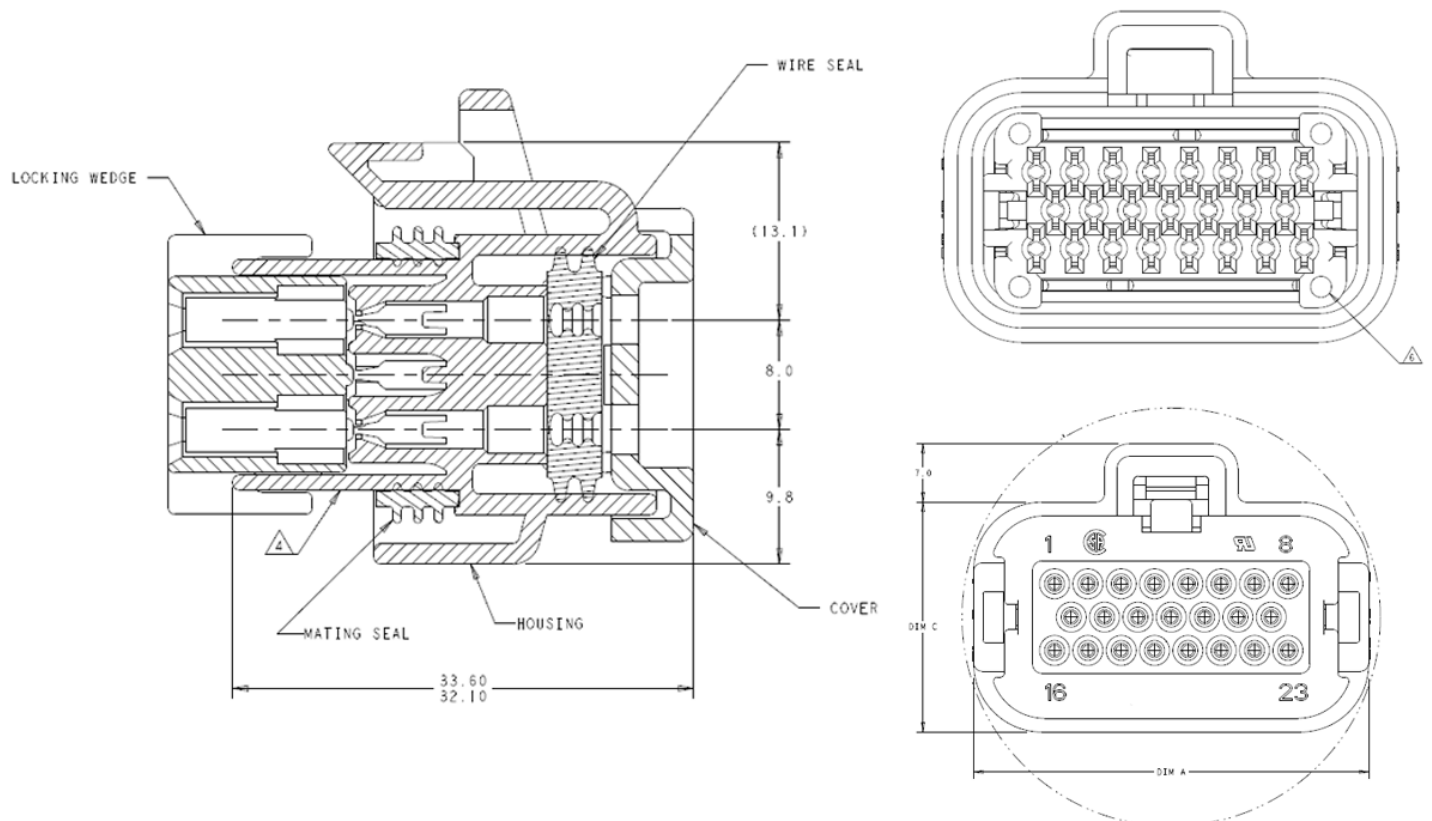
Uses: for cars, trucks, buses and off-highway vehicles in the shell

Packing: 220pcs



Connector harness connector female terminal housing

Specification



Product Show

